

# URW-547 (4.0t x 2.5m)

- Total width 1.4m
- Max working radius 17.83m
- Diesel powered and optional mains electric
- Zero length increase with electric option
- Operator control of outrigger extension
- Intelligent voice warning system
- Radio remote control as standard
- Working area limitation
- Slew limitation (optional)
- Intelligent throttle activation for economy and ecology



Safe load indicator

Max Boom Length 18.02m

Max Lifting Height 18.2m

Capacity 4.0t x 2.5m

Weight 5010 - 5160kg



The URW-547 offers extended reach, providing a maximum lifting height of 18.2 metres and a maximum lifting capacity of 4 tonnes as standard on the main boom. The outrigger footprint remains the same as the URW-506, maintaining its compact dimensions. An option of additional length is given with a quickly installed searcher hook, with angles varying for 0° to 60° and a maximum capacity of 500kgs.

## REMOTES



Standard radio remote control



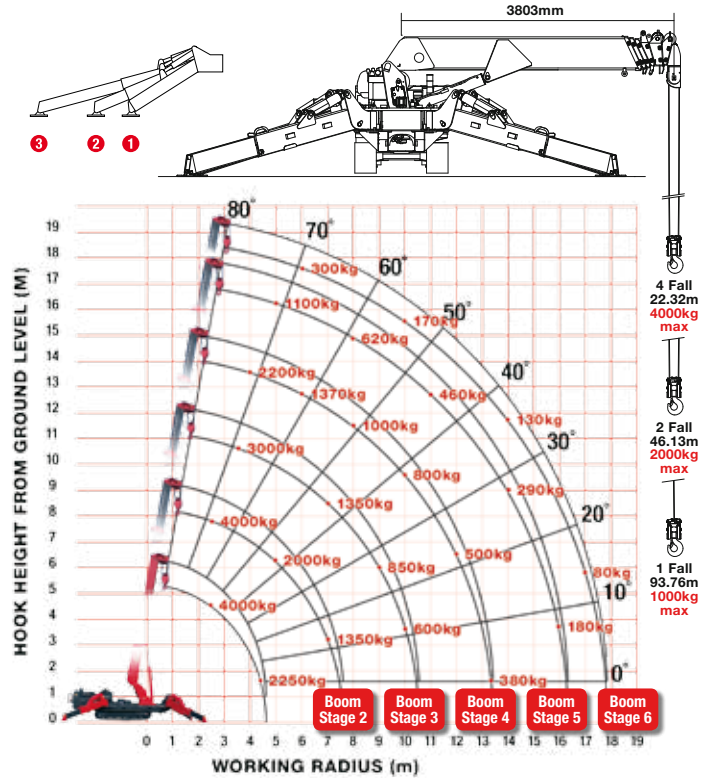
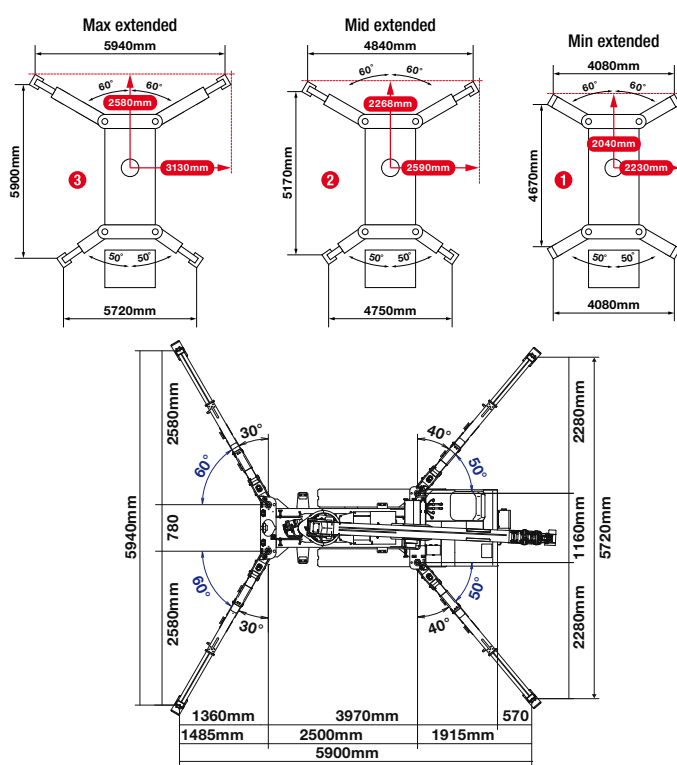
Optional radio remote control with digital feedback

## CRANE SPECIFICATIONS

Crane capacity	capacity:	4.0t x 2.5m
Max working radius	max:	17.83m
Max lifting height	approx:	18.2m
Rope length	max:	22.32m (4 fall), 46.13m (2 fall), 93.76m (1 fall)
Dimensions	folded:	4955mm (l) x 1400mm (w) x 1980mm (h)
Weight	unladen:	5010kg (5160kg with electric option)
Point loadings	Due to the many variables involved, point loadings are only available on request	
Hook speed	approx:	14m/min (with 5 layers and 4 falls)
Telescopic system	boom length:	3.99 - 18.02m
	telescoping speed:	14.03m/35 seconds
	boom type:	7 section hydraulically telescoping boom, hexagonal box construction
Derricking angle/speed	approx:	0 - 80°/18.0 seconds
Slewing angle/speed	approx:	360° (continuous) 2.5min rpm
Traction system	drive:	hydrostatic 2-speed, stepless forward and reverse
	travel speed:	0 - 3km/h
	gradeability:	± 20° (vertical) 20° (traverse)
	track ground length:	1750mm
	track ground pressure:	47kPa (0.48kg/cm²)
	track width:	300mm
Engine	manufacturer:	Mitsubishi / Yanmar
	fuel:	diesel (electric dual power option)
	maximum output:	17.5kW (23.8PS) / 2100min rpm
	starting method:	electric
	tank capacity:	40 litres
Electric motor	power:	7.5kW
	voltage:	400v AC 50/60Hz
Standard equipment	computer controlled moment limiter (safe load indicator), radio remote control, overwinding alarm, computer controlled intelligent voice warning system, multi-function operation by radio remote control, intelligent throttle activation, automatic hook stow, overload warning alarms, overload warning lamps, working area limitation	
Optional equipment	1 fall hook block, 2 fall hook block, mains electric dual power (400v), low marking tracks, slew limitation, searcher hook small 500kg, radio remote control with feedback display, data logging	

# MINI SPIDER CRANE

## RATED LOADS & OUTRIGGER POSITIONS



### SECOND STAGE EXTENDED 3.99 - 7.7M BOOM LENGTH

Working radius	m	up to 2.5	2.7	3.0	3.5	4.0	4.5	5.0	5.5	6.0	7.0	7.25	7.51
Outrigger	Max-extended	kg	4,000	3,850	3,500	3,000	2,550	2,250	2,000	1,800	1,630	1,350	1,300
	Mid-extended	kg	4,000	3,850	3,500	3,000	2,550	2,200	1,850	1,630	1,400	1,010	850
	Min-extended	kg	4,000	3,850	3,500	3,000	2,550	2,100	1,640	1,320	1,080	750	620

### THIRD STAGE EXTENDED 7.7 - 10.66M BOOM LENGTH

Working radius	m	up to 3.5	4.0	5.0	6.0	7.0	8.0	9.0	10.0	10.20	10.47
Outrigger	Max-extended	kg	3,000	2,550	2,000	1,650	1,350	1,100	850	600	520
	Mid-extended	kg	3,000	2,550	1,850	1,400	1,100	830	630	490	430
	Min-extended	kg	3,000	2,550	1,650	1,150	840	620	460	350	300

### FOURTH STAGE EXTENDED 10.66 - 13.57M BOOM LENGTH

Working radius	m	up to 4.0	4.5	5.0	6.0	7.0	8.0	9.0	10.0	11.0	12.0	13.0	13.38	
Outrigger	Max-extended	kg	2,200	1,900	1,700	1,370	1,150	1,000	900	800	660	500	410	380
	Mid-extended	kg	2,200	1,800	1,600	1,300	1,050	850	700	550	450	360	290	260
	Min-extended	kg	2,200	1,800	1,600	1,150	800	650	520	400	320	250	190	170

### FIFTH STAGE EXTENDED 13.57 - 16.48M BOOM LENGTH

Working radius	m	up to 5.0	5.5	6.0	7.0	8.0	9.0	10.0	11.0	12.0	13.0	14.0	15.0	16.0	16.29	
Outrigger	Max-extended	kg	1,100	950	880	730	620	570	520	460	410	350	290	230	180	170
	Mid-extended	kg	1,100	950	880	700	600	520	450	400	350	300	250	190	140	140
	Min-extended	kg	1,100	950	850	700	500	420	390	340	290	230	180	140	100	100

### SIXTH STAGE EXTENDED 16.48 - 18.02M BOOM LENGTH

Working radius	m	up to 6.0	7.0	8.0	9.0	10.0	11.0	12.0	13.0	14.0	15.0	16.0	17.0	17.83	
Outrigger	Max-extended	kg	300	250	230	200	170	160	150	140	130	120	110	80	50
	Mid-extended	kg	300	250	230	200	170	160	150	140	130	120	110	80	50
	Min-extended	kg	300	250	230	200	170	160	150	140	130	120	110	80	50

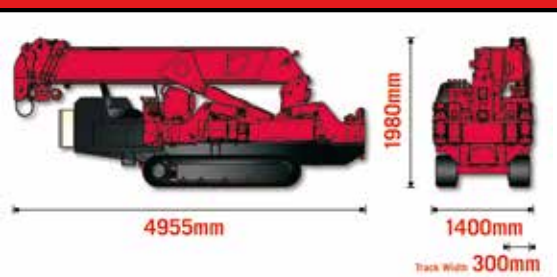
### 500kg SEARCHER HOOK RADIUS RATED (UP TO 16.48M)

WORKING RADIUS (M)	NET RATED LOADS (kg)		
	MAX	MID	MIN
3.0	500	500	500
4.0	500	500	500
5.0	500	500	500
6.0	500	500	500
7.0	400	350	320
8.0	330	280	220
9.0	270	230	180
10.0	220	190	130
11.0	180	160	100
12.0	150	130	
13.0	130	100	
14.0	120		
15.0	110		
16.0	100		

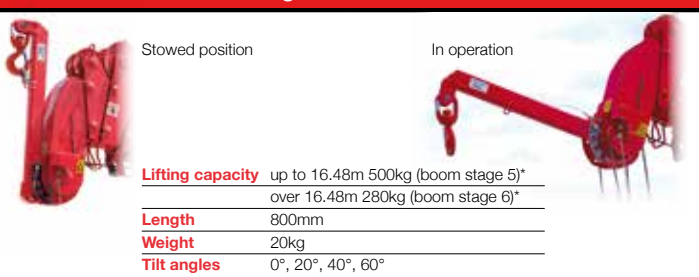
### 500kg SEARCHER HOOK RADIUS RATED (OVER 16.48M)

WORKING RADIUS (M)	NET RATED LOADS (kg)		
	MAX	MID	MIN
3.0	280	280	280
4.0	280	280	280
5.0	280	280	280
6.0	280	280	280
7.0	210	210	210
8.0	170	170	170
9.0	130	130	130
10.0	100	100	100
11.0			
12.0			
13.0			
14.0			
15.0			
16.0			

## DIMENSIONS



## SEARCHER HOOK SMALL - 500kg



\* Please note: The URW-547 lifting capacity information is based on boom stages, not boom sections.